

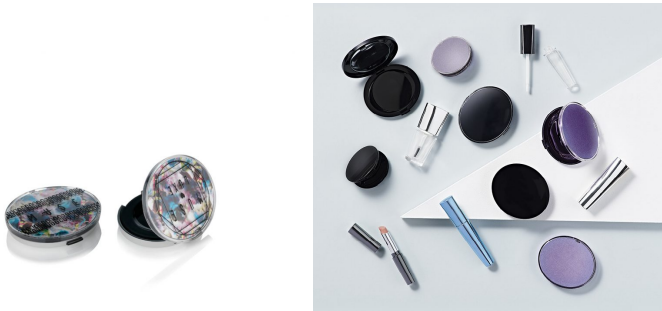
# Cool Art Solo Eyeshadow Compact (with applicator recess)



The 'Cool Art' line has a soft, oval profile; complemented by high quality materials and functional design features. The Cool Art Eyeshadow compact can be presented in simple moulded colours or enhanced with HCP's creative secondary finishing techniques while the two-piece cover offers the opportunity for a decorative cover insert. This item has a finger recess opening. Full colour artwork can be achieved to enhance the brand aesthetic. This item has an oval recess with a curved recess to accommodate an applicator.

HCP Ref:  
18A (with applicator recess)

<https://www.hcpackaging.com/product/cool-art-eyeshadow-2/>



Profile	Dimensions	Insert Options	Special Features
Oval	Height: 12.7mm Width: 57.1mm Depth: 49.5mm Well/s Dimensions: (1x) W:37.14 x D:26 x H:4mm (1x) W:40 x D:9 x H:6.3mm	Insert Options: Single, Injection Moulded, Metal Pressing Pan, Applicator Recess	Mirror Clasp/Finger Recess Opening

## Manufacturing Location

Asia